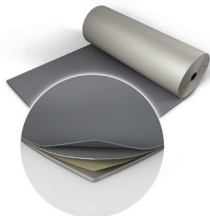
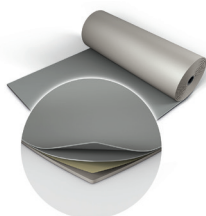


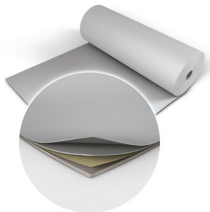
**Additional Colors:**



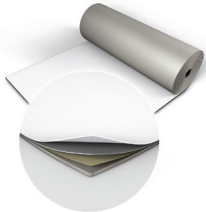
Dark Gray  
STU406



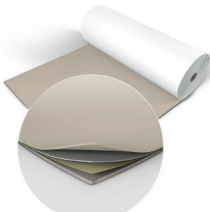
Gray  
STU880



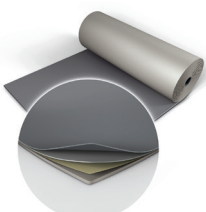
Light Gray  
STU156



White  
STU100



Beige  
STU310



Fog  
STU890

\*Custom colors available through special order

**American Harlequin Corporation**

1531 Glen Avenue  
Moorestown, NJ 08057

(800) 642 6440  
contact@harlequinfloors.com  
harlequinfloors.com

The Company reserves the right to make any variation in design or construction of the material described.  
© Harlequin Floors 1/2024

PHILADELPHIA  
LOS ANGELES  
LAS VEGAS  
LONDON  
PARIS  
BERLIN  
LUXEMBOURG  
MADRID  
SYDNEY  
HONG KONG  
TOKYO

**Harlequin Studio** is produced from a particularly hard-wearing vinyl and its formulation focuses on the demands of dancers. The result is a slip-resistant floor that offers dancers added confidence for demanding choreography and movement.

**Utilization:** Harlequin Studio's firm yet lightweight foam backing offers protection against hard sub-floors, making it a top pick for touring. It's suitable for aerobics, Zumba, hip-hop, jazz, street, ballet, contemporary, and modern dance.

**Installation:** Designed for dance, studio, and stage applications, Harlequin Studio is suitable for loose-lay or permanent installation in dance institutions, studios, schools, and theaters. It's also a superb vinyl dance surface when used with a Harlequin sprung floor.

**Specification Guide**

<b>Permanent or Portable</b>	Both
<b>Roll width</b>	59" (1.5m)
<b>Roll length</b>	32'8", 49'2", 59', 65'7", 82', 98'5" (10m, 15m, 18m, 20m, 25m, 30m)
<b>Colors</b>	Black, Gray, White, Fog, Light Gray, Dark Gray, Beige
<b>Thickness</b>	0.120" (3mm)
<b>Weight</b>	4.2 lbs/yd <sup>2</sup> (2.3 kg/m <sup>2</sup> )
<b>Fire rating</b>	ASTM E648, E662 – Class 1
<b>Recycled Content</b>	23-30%
<b>VOC Emissions</b>	≤0.5mg/m <sup>3</sup>
<b>Recyclability</b>	100%
<b>Third Party Certification</b>	Environmental product Declaration A+ LEED, BREEAM, REACH Compliant

**Harlequin's Vinyl Floor Application Guide**

In addition to Harlequin Studio, we also produce a wide range of other vinyl floors, which are listed below.

✓ = We recommend. \* = Please ensure tap screws are fully tightened before use.

	Aerobics/Zumba	Ballet	Ballroom/Salsa	Concerts	Contemporary	Display/Events	Hip-Hop/Jazz/Street	Modern	Multi-purpose	Percussive* (Irish, Tap)	Theatre/Opera	TV/Film Productions
<b>Allegro</b>	✓				✓		✓	✓				
<b>Cascade</b>	✓	✓		✓	✓		✓	✓	✓	✓	✓	
<b>Fiesta</b>	✓		✓			✓	✓		✓	✓	✓	✓
<b>FreeStyle</b>	✓				✓		✓	✓				
<b>Hi-Shine</b>				✓		✓					✓	✓
<b>Marine</b>				✓					✓	✓	✓	✓
<b>Reversible</b>	✓	✓		✓	✓	✓	✓	✓	✓	✓	✓	✓
<b>Reversible Pro</b>	✓	✓		✓	✓	✓	✓	✓	✓	✓	✓	✓
<b>Standfast</b>	✓	✓			✓		✓	✓	✓	✓	✓	✓
<b>Studio</b>	✓	✓			✓		✓	✓				
<b>Studio B</b>	✓	✓			✓		✓	✓				

**CALL 800-642-6440 or VISIT [www.harlequinfloors.com](http://www.harlequinfloors.com)**

For samples or information on Harlequin Floors complete range of vinyl and sprung floors.