

CASE STUDY



Harlequin Floors Transforms Stage in Dance Theater

Summary

The decision to undergo a renovation of a building on a college campus can arise from a variety of factors:

- **Safety Concerns** – Does the space meet current industry health and safety standards?
- **Functionality** – Is the space versatile enough to suit the needs of its programs, students and staff?
- **Growth** – Has the program outgrown their space?
- **Budget & Timing** – Are funds available to complete the project on time and on budget?

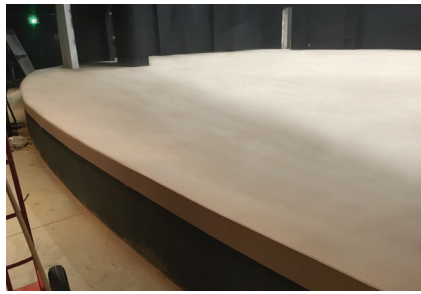
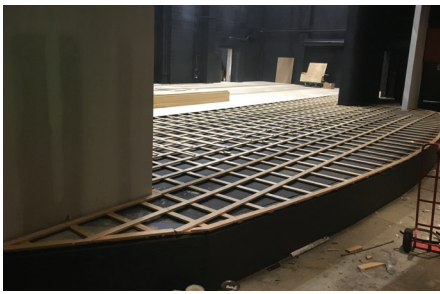
Kennesaw State University (KSU), was motivated to renovate the Joe Mack Wilson Theatre not only for these concerns but also because their Department of Dance, the largest collegiate dance program in Georgia, lacked a permanent space suitable for dance. This renovation project provided KSU an opportunity to turn the theater into the area's only venue built specifically for dance and to create an extraordinary home for the school's dance program. The project design team requested Harlequin to provide a permanent sprung dance floor with a durable performance surface for the stage floor

Challenge

As the stage area was not a standard dance space, concerns were raised about the sturdiness of the sprung floor. It was imperative that the new floor would be strong enough to allow crews to roll lifts across the stage area. The vinyl performance surface would need to be ideal for all types of dance and durable enough to withstand the rigors of heavy stage props and equipment. Additionally, the theatre design team required installation of trap doors in the main stage floor that would leave a seamless horizon and unsprung wings for the stage structure.

American Harlequin Corporation
800-642-6440
contact@harlequinfloors.com





Solution

Knowing that the stage floor would need to be sturdy enough to withstand the rigors of heavy stage props and equipment, Harlequin WoodSpring® was installed as the sprung floor system along with Harlequin Cascade™ as the top performance surface. Cascade is a hardwearing, multipurpose marley floor designed specifically for dance. This combination of flooring was an ideal solution for KSU as it resolved concerns about durability and causing damage to the stage floor.

Through the expertise of our installation team, they delivered a recommendation on the placement of the trap doors that pleased the design team. Trap doors were strategically cut into the main stage floor providing a seamless horizon and unsprung wings were incorporated into the structure of the proscenium theatre.

Project Snapshot

Client: Kennesaw State University (KSU)

Design Consultants: Lighting & Production Equipment

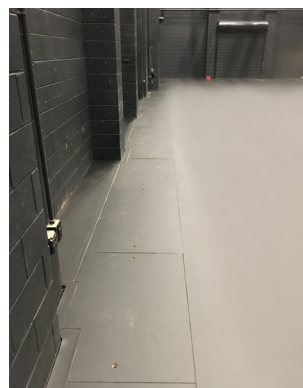
Location: Marietta, GA

Products: Harlequin WoodSpring®, Harlequin Cascade™, Installation, Stage Refurbishment

Scope: Installation of a permanent sprung floor system with a dance performance surface on refurbished stage area. Customization included trap doors in main stage floor and unsprung wings.

“Having served the Department of Dance at Kennesaw State University since 2011, providing a world-class product with highly professionalized installation and customer service. We were pleased to recently install Harlequin floors in the regions first Dance Theater developed at KSU.”

— Dr. Ivan Pulinkala, Professor & Chair, Department of Dance



Result

After finalizing the floor plan and stage area with the project team, and once construction was ready for the stage work to begin, Harlequin completed the customized installation of the new stage floor, complete with trap doors and unsprung wings, in less than a week’s time ensuring the new dance theater would move forward toward their opening date. KSU is equipped with a permanent, professional dance floor in the venue.