

Lighting & Sound America

\$10.00

plasma media

Ascend Amphitheater

A new outdoor concert destination in Nashville

ALSO:

The Democratic/Republican Conventions

Alice in Wonderland at the Shaw Festival

Sound for Broadway's *Paramour*

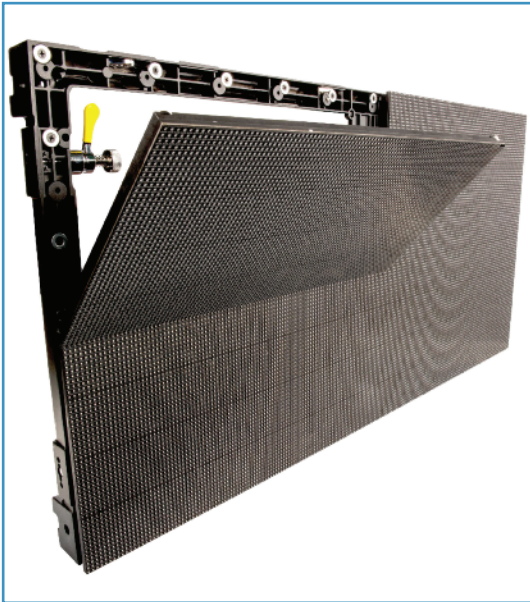
Clay Paky Scenius Profile

Meyer Sound MJF-208

Total Structures Turns 25

NATEAC Report

LCD panels for up to 20,000 hours of virtually maintenance-free operation, including 24/7 usage. Epson's lineup of 3LCD laser projectors supports 360° installation, edge-blending, stacking, portrait-mode projection, mapping, and a variety of lens options. www.epson.com



Chauvet Professional — VIP F4 Video Panel

Featuring cable-free magnetic LED modules and a removable control/PSU box, these new video panels are fully serviceable from the front or rear. The panels can be removed easily from the front, using an MT-03 tool, making it practical to install the F4 flat on a wall in permanent installations. They also come with road cases for touring applications. Running Chauvet Professional's VIP Driver 43Nova Novastar controller, the F4 takes video input and outputs it over an Ethernet control system, allowing the video wall to be mapped without a computer. Novastar protocol can be used to scale video output, adjusting color, brightness, and other parameters. Chauvet Professional worked with Novastar to develop unique control features for its controller/panel system,

which focus on advanced mapping functions with visual feedback directly on the panels, to help simplify the process for users. The F4 has 21,632 RGB SMD 3528 black body LEDs that produce high-contrast images. Its 140° viewing angle and 1,500nits illuminance ensure that its output will be vivid and crisp from any perspective at a range of ambient light levels. Its minimum viewing distance is 13'. A display refresh rate of 3,840Hz helps to ensure that it will perform well in a variety of applications, the company says, including broadcast. The panels can also be rotated 90° to create special shapes. www.chauvetprofessional.com

Maxon — Cinema 4D Release 18

Cinema 4D R18 has new, easily accessible tools that are tailored to the needs of creative professionals to help master the challenges of digital production for TV, film, games, architecture, advertising, and design, the company says. Highlights include the Voronoi fracture object—a native feature in the MoGraph toolset in Cinema 4D that works seamlessly with dynam-

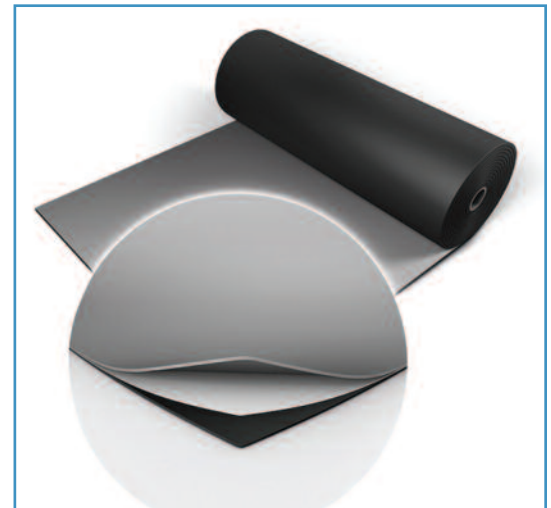


ics, allowing users to tear down walls and create artistic procedural geometry using spline or polygon objects to define the fractured shape. Also included are interactive knife tools, which enable users to draw lines across a model and tweak the cut with

an interactive preview, then lock in new edges or split, based on the cut; knife tools are available as separate commands for easy access to the desired mode via shortcut or commander. Additional features include object motion tracking, shaders and surface effects, and substance engine integration. www.maxon.net

Harlequin Floors — Reversible Pro

Reversible Pro is the newest addition to Harlequin Floors' line of portable marley floors. Reversible Pro features a reinforced mineral-fiber interply layer



for improved tear strength and dimensional stability. This durable, multipurpose floor is designed for all types of dance and performance, by dance studios, touring companies, and stage technicians. Harlequin Reversible Pro retains the same features as the Harlequin Reversible—it is lightweight, hard-wearing, and slip-resistant on both sides. The unique double-sided option allows companies to flip the floor over and change colors around. The floor is currently available in two colors: black/white and black/gray. www.harlequinfloors.com